

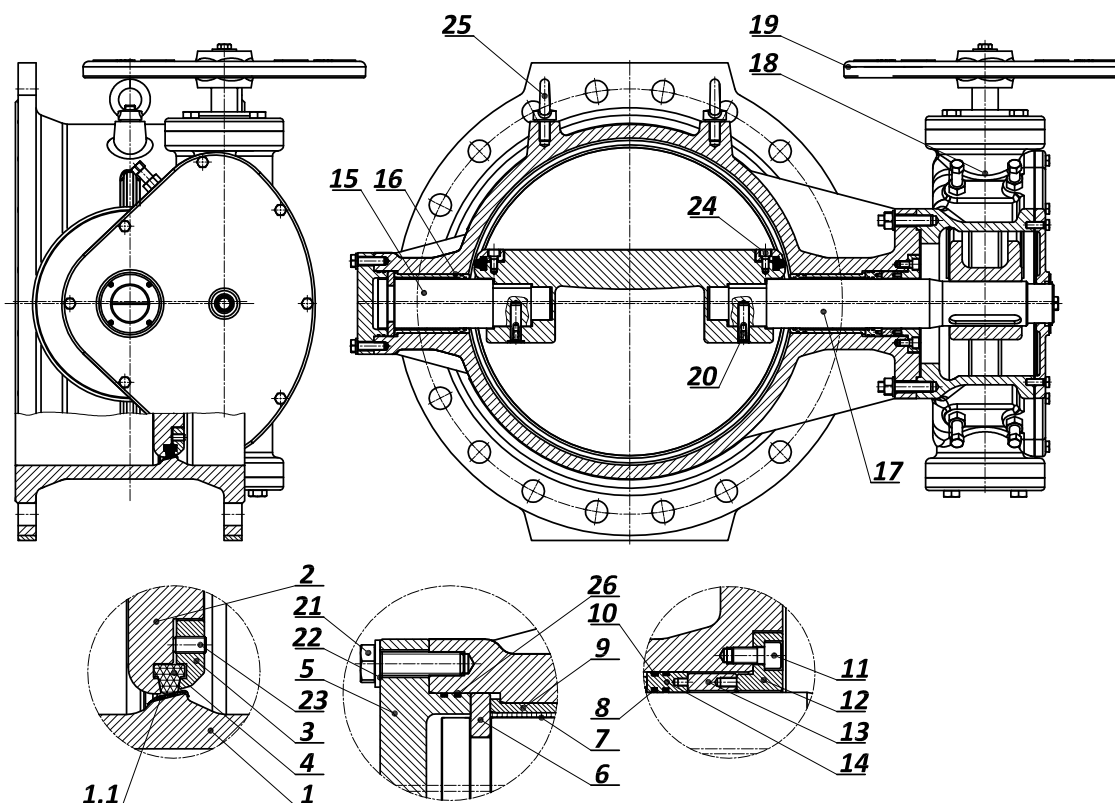
LEPTIRASTI ZATVARAČ S DVA EKSCENTRA PREMA EN 593
 ABSPERRKLAPPE MIT DOPPEL EXZENTER NACH EN 593
 DOUBLE ECCENTRIC BUTTERFLY VALVE ACCORDING TO EN 593

Art N°
 V3-06



GSK-ID: 1238

| NAZIVNI PROMJER NENNWEITE NOMINAL SIZE | NAZIVNI TLAK NENNDRUCK PRESSURE RATING | PRIRUBNICE FLANSHE FLANGES EN 1092-2 | VODNI ISPITNI TLAK PREMA EN 12266 WASSERPRÜFDRUCK NACH EN 12266 TEST PRESSURE ACCORDING TO EN 12266 bar | |
|--|---|---|--|------------------------------------|
| | | | KUČIŠTE GEHAUS BODY | ZATVORENO GESCHLOSSEN CLOSED |
| DN | PN bar | bar | | |
| 100 – 2000 | 10 | 10 | 15 | 11 |
| 100 – 2000 | 16 | 16 | 24 | 17,6 |
| 100 – 1600 | 25 | 25 | 37,5 | 27,5 |
| 100 – 800 | 40 | 40 | 60 | 44 |



STANDARDNA NAMJENA: VODA, PITKA VODA, OTPADNA VODA
STANDARD VERWENDUNG: WASSER, TRINKWASSER, ABWASSER
STANDARD APPLICATION: WATER, POTABLE WATER, WASTE WATER

MAX. RADNA TEMPERATURA: 60°C (ostalo na upit)
MAX. ARBEIT TEMPERATUR: 60°C (Andere auf Anfrage)
MAX. WORKING TEMPERATURE: 60°C (other on request)

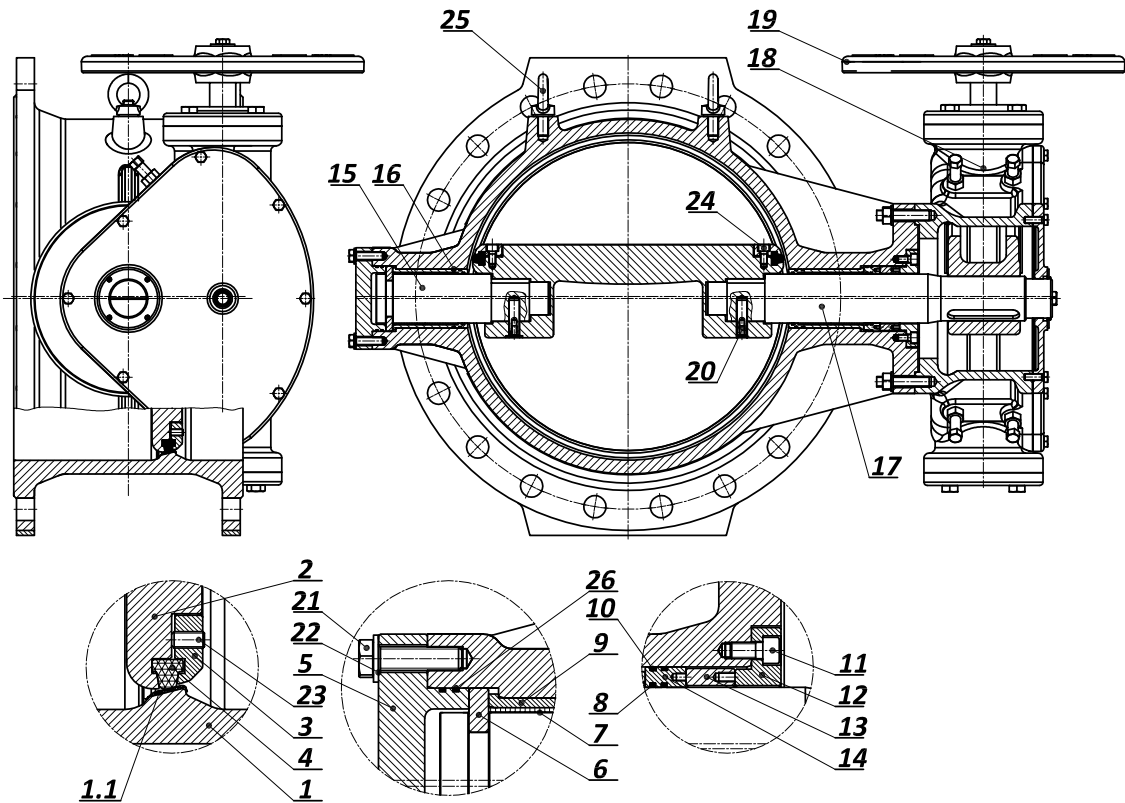
Ugradna mjera / Baulängereihe / Face to face: EN 558 SERIES 14

Standardna površinska zaštita: plastificirano min. 250 mic RAL 5015
 Standard beschichtung: Pulverbeschichted min. 250 mic RAL 5015
 Standard coating: Fusion bonded epoxy powder min. 250 mic RAL 5015

Ostali mediji / aplikacije ili površinska zaštita na upit
 Andere Medium / Verwendung oder beschichtung auf Anfrage
 Other medium / application or coating on request

Prirubnice izvedene za ugradnju prema EN 1092-2 ili na zahtjev prema ostalim standardima.
 Einbaufansche nach EN 1092-2 oder auf Anfrage nach andere Standard.
 Installation flanges according to EN 1092-2 or on request according to other standard.

Leptirasti zatvarači nepropusni su u oba smjera prema EN 1074-2. U slučaju velike razlike diferencijalnog tlaka preporučeno je ugraditi leptirasti zatvarač tako da je strana većeg tlaka na strani vratila (strana A).
 Die Absperrklappen sind nach EN 1074-2 in beide Richtungen geeignet. Bei einem großen Differenzdruckunterschied, ist die Absperrklappe so einzubauen, dass die Seite mit dem höheren Druck auf der Spindel-seite (Seite A) ist.
 Butterfly valves are suitable for both directions according to EN 1074-2. Where there is a great difference in differential pressure, the butterfly valve should be installed in such a way as to make sure that the side with greater pressure is on the side of the spindle (side A).

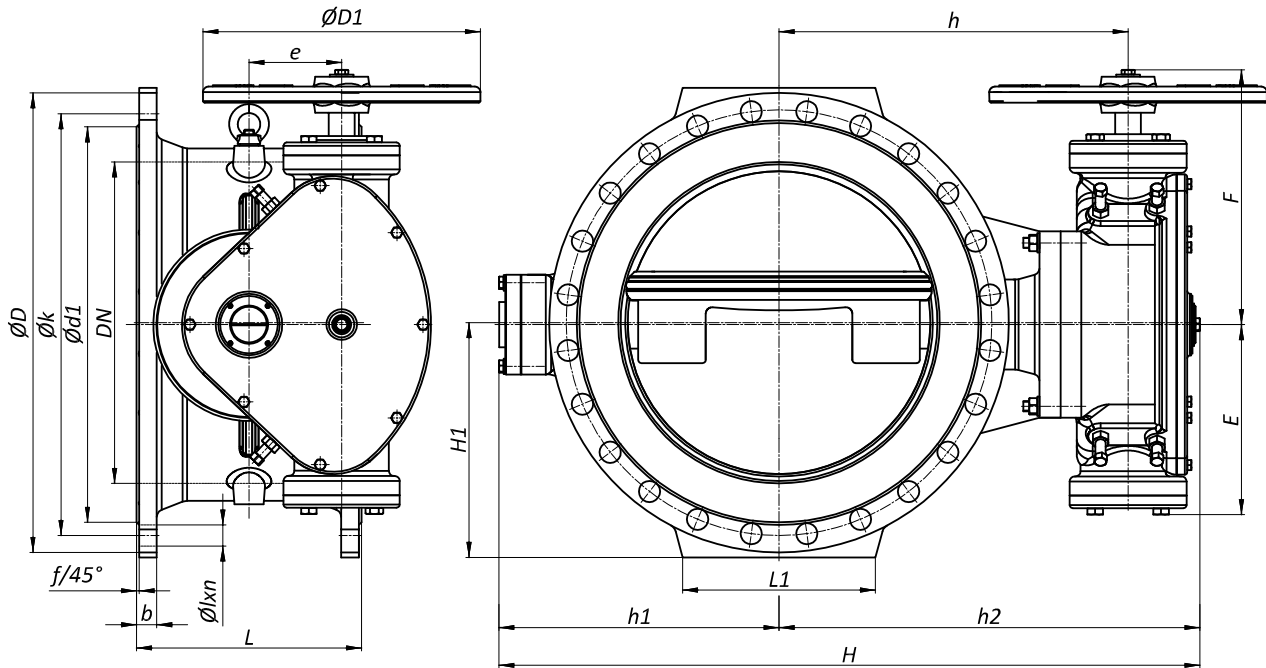


| POZICIJA POSITION POSITION | NAZIV POZICIJE | TEIL | PART | MATERIJAL MATERIAL MATERIAL |
|----------------------------------|------------------------|------------------------|----------------------------|-----------------------------------|
| 1 | Kučšte | Gehäuse | Body | EN-GJS-400-15 |
| 1.1 | Brtneni prsten kučišta | Gehäuse Sitzring | Body seat ring | NIRO |
| 2 | Disk | Klappenscheibe | Disc | EN-GJS-400-15 |
| 3 | Prsten diska | Spannring | Disc Ring / Retaining Ring | X6CrNiMoTi 17-12-2 |
| 4 | Profilni prsten | Dichtung | Profile sealing Ring | EPDM |
| 5 | Poklopac osovine | Deckel | Shaft Cover | EN-GJS-400-15 |
| 6 | Dvodijelni prsten | Axiallager | Axial Bearing | CC493K |
| 7 | PAP ležaj | PAP Lager | PAP Bearing | PTFE/NIRO |
| 8 | "O" prsten | "O" Ring | "O" Ring | EPDM |
| 9 | Ležajna puškica | Lagerbuchse | Bearing Bush | CC493K |
| 10 | "O" prsten | "O" Ring | "O" Ring | EPDM |
| 11 | Vijak | Schraube | Screw | 8.8 galv. |
| 12 | Poklopac brtvenice | Dichtungsbuchse Deckel | Sealing Bush Cover | EN-GJS-400-15 |
| 13 | Distantni prsten | Distanzstück | Distance Ring | EN-GJS-400-15 |
| 14 | Brtnena puškica | Dichtungsbuchse | Sealing Bush | CC493K |
| 15 | Osovina | Achse | Shaft | X20Cr13 |
| 16 | "O" prsten | "O" ring | "O" Ring | EPDM |
| 17 | Vratilo | Welle | Driven Shaft | X20Cr13 |
| 18 | Reduktor | Getriebe | Gearbox | - |
| 19 | Ručno kolo | Handrad | Hand Wheel | EN-GJS-400-15 |
| 20 | Zatik | Stift | Pin | X20Cr13 |
| 21 | Vijak | Schraube | Screw | 8.8 galv. |
| 22 | Podložna pločica | Schaube | Washer | galv. |
| 23 | Vijak | Schraube | Screw | A4 |
| 24 | Vijak | Schraube | Screw | A4 |
| 25 | Očni vijak | Schraube zur Erhöhung | Lifting Eye Nut | C15 |
| 26 | "O" brtva | "O" Ring | "O" Ring | EPDM |

* standard materials
* other materials on request

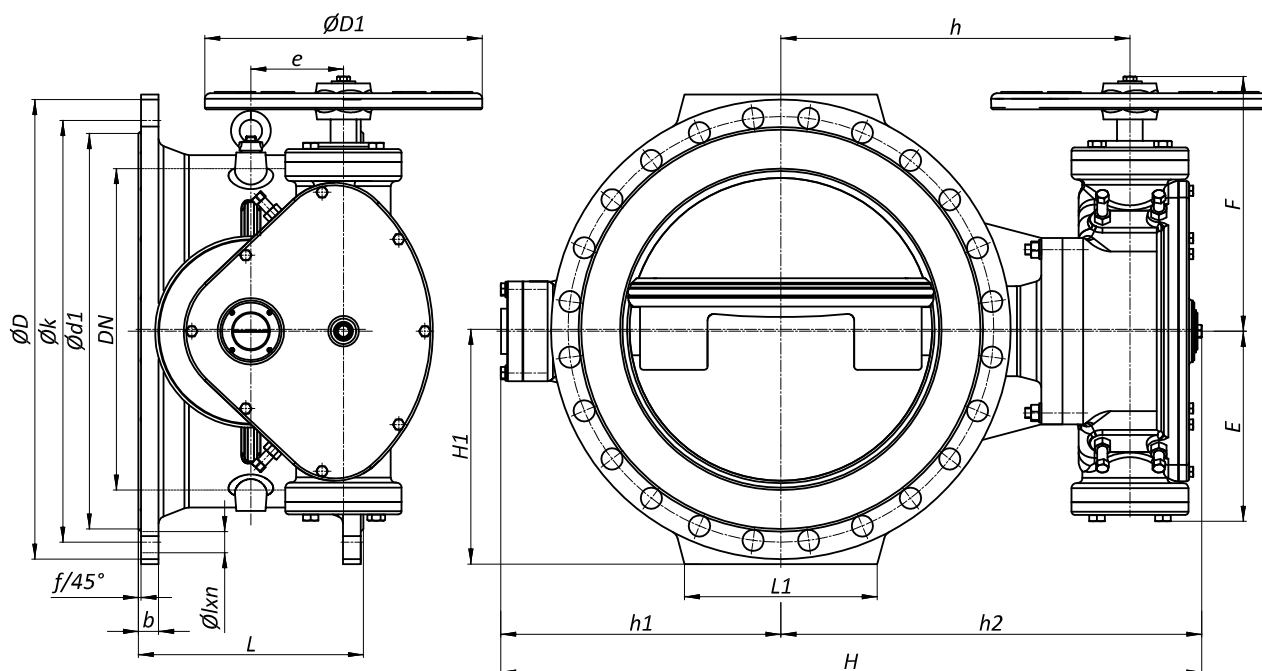
* Standardwerkstoffe
* Andere Werkstoffe auf Anfrage

* standardni materijali
* ostali materijali na upit



PN 10

| DN | L | D | k | d ₁ | l | n | b | f | h | h ₁ | h ₂ | H | H1 | L1 | D1 | E | F | e | m (kg) |
|------|-----|------|------|----------------|----|----|------|---|--------|----------------|----------------|------|--------|------|------|-----|-----|-----|--------|
| 100 | 190 | 220 | 180 | 156 | 19 | 8 | 19 | 3 | 209 | 147 | 270 | 417 | 115 | 100 | 160 | 125 | 165 | 50 | 38,5 |
| 150 | 210 | 285 | 240 | 211 | 23 | 8 | 19 | 3 | 236 | 164 | 298 | 462 | 147,5 | 150 | 160 | 125 | 165 | 50 | 48,5 |
| 200 | 230 | 340 | 295 | 266 | 23 | 8 | 20 | 3 | 266 | 206 | 328 | 534 | 180 | 160 | 160 | 125 | 165 | 50 | 68,5 |
| 250 | 250 | 395 | 350 | 319 | 23 | 12 | 22 | 3 | 323 | 240 | 385 | 625 | 207,5 | 180 | 160 | 125 | 165 | 50 | 82,5 |
| 300 | 270 | 445 | 400 | 370 | 23 | 12 | 24,5 | 4 | 383 | 295 | 460 | 755 | 232,5 | 200 | 160 | 200 | 265 | 85 | 126,5 |
| 350 | 290 | 505 | 460 | 429 | 23 | 16 | 24,5 | 4 | 413 | 320 | 490 | 810 | 262,5 | 225 | 125 | 200 | 265 | 85 | 146,5 |
| 400 | 310 | 565 | 515 | 480 | 28 | 16 | 24,5 | 4 | 438 | 345 | 515 | 860 | 292,5 | 250 | 160 | 200 | 265 | 85 | 196 |
| 450 | 330 | 615 | 565 | 530 | 28 | 20 | 25,5 | 4 | 488 | 375 | 565 | 940 | 317,5 | 250 | 200 | 200 | 265 | 85 | 276 |
| 500 | 350 | 670 | 620 | 582 | 28 | 20 | 26,5 | 4 | 543 | 445 | 643 | 1088 | 345 | 300 | 250 | 300 | 390 | 145 | 349 |
| 600 | 390 | 780 | 725 | 682 | 31 | 20 | 30 | 5 | 584 | 480 | 684 | 1164 | 400 | 330 | 250 | 300 | 390 | 145 | 468 |
| 700 | 430 | 895 | 840 | 794 | 31 | 24 | 32,5 | 5 | 685 | 553 | 819 | 1368 | 457,5 | 400 | 315 | 400 | 500 | 230 | 648 |
| 800 | 470 | 1015 | 950 | 901 | 34 | 24 | 35 | 5 | 750 | 663 | 880 | 1543 | 517,5 | 450 | 400 | 400 | 500 | 230 | 955 |
| 900 | 510 | 1115 | 1050 | 1001 | 34 | 28 | 37,5 | 5 | 824 | 713 | 954 | 1667 | 567,5 | 550 | 400 | 400 | 500 | 230 | 1175 |
| 1000 | 550 | 1230 | 1160 | 1112 | 37 | 28 | 40 | 5 | 880 | 750 | 1010 | 1760 | 625 | 600 | 500 | 400 | 500 | 230 | 1365 |
| 1200 | 630 | 1455 | 1380 | 1328 | 41 | 32 | 45 | 5 | 991 | 871 | 1121 | 1992 | 742,5 | 700 | 1000 | 400 | 500 | 230 | 2200 |
| 1400 | 710 | 1675 | 1590 | 1530 | 44 | 36 | 46 | 5 | 1093 | 985 | 1348 | 2333 | 852,5 | 800 | 400 | 395 | 853 | 400 | 2574 |
| 1600 | 790 | 1915 | 1820 | 1750 | 50 | 40 | 49 | 5 | 1233 | 1115 | 188 | 2603 | 972,5 | 1000 | 720 | 395 | 853 | 400 | 5040 |
| 1800 | 870 | 2115 | 2020 | 1950 | 50 | 44 | 52 | 5 | 1378 | 1246 | 1633 | 2879 | 1072,5 | 1100 | 630 | 395 | 853 | 400 | 6395 |
| 2000 | 950 | 2325 | 2230 | 2150 | 50 | 48 | 55 | 5 | 1604,5 | 1494,5 | 1859,5 | 3354 | 1177,5 | 1300 | 630 | 395 | 853 | 400 | 9630 |



PN 16

| DN | L | D | k | d_1 | l | n | b | f | h | h_1 | h_2 | H | H1 | L1 | D1 | E | F | e | m (kg) |
|------|-----|------|------|-------|----|----|------|---|--------|--------|--------|--------|--------|------|------|-----|-----|-----|--------|
| 100 | 190 | 220 | 180 | 156 | 19 | 8 | 19 | 3 | 209 | 147 | 270 | 417 | 115 | 100 | 160 | 125 | 165 | 50 | 38,5 |
| 150 | 210 | 285 | 240 | 211 | 23 | 8 | 19 | 3 | 236 | 164 | 298 | 462 | 147,5 | 150 | 160 | 125 | 165 | 50 | 48,5 |
| 200 | 230 | 340 | 295 | 266 | 23 | 12 | 20 | 3 | 291 | 206 | 353 | 559 | 180 | 160 | 160 | 125 | 165 | 50 | 68,5 |
| 250 | 250 | 405 | 355 | 319 | 28 | 12 | 22 | 3 | 323 | 240 | 385 | 625 | 212,5 | 180 | 160 | 125 | 165 | 50 | 82,5 |
| 300 | 270 | 460 | 410 | 370 | 28 | 12 | 24,5 | 4 | 383 | 295 | 460 | 755 | 240 | 200 | 125 | 200 | 265 | 85 | 146,5 |
| 350 | 290 | 520 | 470 | 429 | 28 | 16 | 26,5 | 4 | 413 | 320 | 460 | 810 | 270 | 225 | 200 | 200 | 265 | 85 | 159,5 |
| 400 | 310 | 580 | 525 | 480 | 31 | 16 | 28 | 4 | 438 | 345 | 515 | 860 | 300 | 250 | 200 | 200 | 265 | 85 | 229 |
| 450 | 330 | 640 | 585 | 548 | 31 | 20 | 30 | 4 | 488 | 375 | 565 | 940 | 330 | 250 | 250 | 200 | 265 | 85 | - |
| 500 | 350 | 715 | 650 | 609 | 34 | 20 | 31,5 | 4 | 543 | 445 | 643 | 1088 | 367,5 | 300 | 250 | 300 | 390 | 145 | 428 |
| 600 | 390 | 840 | 770 | 720 | 37 | 20 | 36 | 5 | 584 | 480 | 684 | 1164 | 430 | 330 | 400 | 300 | 390 | 145 | 518 |
| 700 | 430 | 910 | 840 | 794 | 37 | 24 | 39,5 | 5 | 685 | 553 | 815 | 1368 | 465 | 400 | 400 | 400 | 500 | 230 | 755 |
| 800 | 470 | 1025 | 950 | 901 | 41 | 24 | 43 | 5 | 750 | 663 | 880 | 1543 | 522,5 | 450 | 500 | 400 | 500 | 230 | 995 |
| 900 | 510 | 1125 | 1050 | 1001 | 41 | 28 | 46,5 | 5 | 824 | 713 | 954 | 1667 | 572,5 | 550 | 630 | 400 | 500 | 230 | 1255 |
| 1000 | 550 | 1255 | 1170 | 1112 | 44 | 28 | 50 | 5 | 880 | 750 | 1010 | 1760 | 637,5 | 600 | 1000 | 400 | 500 | 230 | 1455 |
| 1200 | 630 | 1485 | 1390 | 1328 | 50 | 32 | 57 | 5 | 991 | 871 | 1121 | 1992 | 757,5 | 700 | 400 | 400 | 500 | 230 | 2322 |
| 1400 | 710 | 1685 | 1590 | 1530 | 50 | 36 | 60 | 5 | 1093 | 992 | 1348 | 2340 | 857,5 | 800 | 500 | 395 | 853 | 400 | 2892 |
| 1600 | 790 | 1930 | 1820 | 1750 | 57 | 40 | 65 | 5 | 1263 | 1135,5 | 1518 | 2653,5 | 980 | 1000 | 630 | 395 | 853 | 400 | 5040 |
| 1800 | 870 | 2130 | 2020 | 1950 | 57 | 44 | 70 | 5 | 1378 | 1246 | 1666 | 2912 | 1080 | 1100 | 630 | 395 | 853 | 400 | 6395 |
| 2000 | 950 | 2345 | 2230 | 2150 | 62 | 48 | 75 | 5 | 1604,5 | 1519,5 | 1859,5 | 3379 | 1187,5 | 1300 | 630 | 395 | 853 | 400 | 9630 |

PN 25

| DN | L | D | k | d ₁ | l | n | b | f | h | h ₁ | h ₂ | H | H1 | L1 | D1 | E | F | e | m (kg) |
|------|-----|------|------|----------------|----|----|------|---|------|----------------|----------------|-------|-------|-----|-----|-----|-----|-----|--------|
| 100 | 190 | 235 | 190 | 156 | 23 | 8 | 19 | 3 | 209 | 147 | 270 | 417 | 115 | 100 | 160 | 125 | 165 | 50 | 38,5 |
| 150 | 210 | 300 | 250 | 211 | 28 | 8 | 20 | 3 | 236 | 169 | 297 | 466 | 155 | 150 | 160 | 125 | 165 | 50 | 50 |
| 200 | 230 | 360 | 310 | 274 | 28 | 12 | 22 | 3 | 291 | 205,9 | 352 | 557,9 | 185 | 160 | 160 | 125 | 165 | 50 | 76,5 |
| 250 | 250 | 425 | 370 | 330 | 31 | 12 | 24,5 | 3 | 330 | 248 | 391 | 639 | 222,5 | 200 | 160 | 125 | 165 | 50 | 106,5 |
| 300 | 270 | 485 | 430 | 389 | 31 | 16 | 27,5 | 4 | 394 | 295 | 477 | 772 | 248 | 300 | 200 | 200 | 265 | 85 | 169 |
| 350 | 290 | 555 | 490 | 448 | 34 | 16 | 30 | 4 | 414 | 320 | 503 | 823 | 284,5 | 225 | 200 | 200 | 265 | 85 | - |
| 400 | 310 | 620 | 550 | 503 | 37 | 16 | 32 | 4 | 493 | 345 | 522 | 950 | 315 | 300 | 250 | 300 | 390 | 145 | 253 |
| 450 | 330 | 670 | 600 | 548 | 37 | 20 | 34,5 | 4 | 465 | 375 | 577 | 952 | 340 | 320 | 315 | 300 | 390 | 145 | - |
| 500 | 350 | 730 | 660 | 609 | 37 | 20 | 36,5 | 4 | 570 | 415 | 682 | 1107 | 375 | 400 | 400 | 300 | 390 | 145 | 468 |
| 600 | 390 | 845 | 770 | 720 | 41 | 20 | 42 | 5 | 689 | 535 | 829 | 1364 | 427,5 | 350 | 400 | 400 | 500 | 230 | 775 |
| 700 | 430 | 960 | 875 | 820 | 44 | 24 | 46,5 | 5 | 680 | 520 | 820 | 1340 | 485 | 400 | 500 | 400 | 500 | 230 | - |
| 800 | 470 | 1085 | 990 | 928 | 50 | 24 | 51 | 5 | 780 | 643 | 920 | 1573 | 550 | 500 | 800 | 400 | 500 | 230 | 1125 |
| 900 | 510 | 1185 | 1090 | 1028 | 50 | 28 | 55,5 | 5 | 789 | 725 | 1005 | 1730 | 605 | 550 | 400 | 400 | 500 | 230 | - |
| 1000 | 550 | 1320 | 1210 | 1140 | 57 | 28 | 60 | 5 | 920 | 796 | 1060 | 1856 | 665 | 600 | 400 | 400 | 500 | 230 | 2268 |
| 1200 | 630 | 1530 | 1420 | 1350 | 57 | 32 | 69 | 5 | 970 | 876 | 1110 | 1986 | 770 | 690 | 630 | 400 | 500 | 230 | - |
| 1400 | 710 | 1755 | 1640 | 1560 | 62 | 36 | 74 | 5 | 1093 | 992 | 1348 | 2340 | 857,5 | 700 | 500 | 395 | 853 | 400 | 2892 |
| 1600 | 790 | 1975 | 1860 | 1780 | 62 | 40 | 81 | 5 | 1373 | 1250 | 1628 | 2878 | 997,5 | 900 | 630 | 395 | 853 | 400 | 6080 |

PN 40

| DN | L | D | k | d ₁ | l | n | b | f | h | h ₁ | h ₂ | H | H1 | L1 | D1 | E | F | e | m (kg) |
|-----|-----|------|------|----------------|----|----|------|---|-------|----------------|----------------|-------|-------|-----|-----|-----|-----|-----|--------|
| 100 | 190 | 235 | 190 | 156 | 23 | 8 | 19 | 3 | 209 | 147 | 270 | 417 | 115 | 100 | 160 | 125 | 165 | 50 | 38,5 |
| 150 | 210 | 300 | 250 | 211 | 28 | 8 | 26 | 3 | 236 | 169 | 297 | 466 | 155 | 150 | 160 | 125 | 165 | 50 | 51,5 |
| 200 | 230 | 375 | 320 | 284 | 31 | 12 | 30 | 3 | 314 | 205,9 | 393 | 598,9 | 197,5 | 160 | 160 | 125 | 165 | 50 | 81,5 |
| 300 | 270 | 515 | 450 | 409 | 34 | 16 | 39,5 | 4 | 420,5 | 296,5 | 504 | 800,5 | 263 | 300 | 250 | 200 | 265 | 85 | 197 |
| 400 | 310 | 660 | 585 | 535 | 41 | 16 | 48 | 4 | 495 | 365 | 607 | 972 | 335 | 320 | 315 | 300 | 390 | 145 | 388 |
| 500 | 350 | 755 | 670 | 615 | 44 | 20 | 52 | 4 | 620 | 415 | 760 | 1175 | 380 | 400 | 400 | 400 | 500 | 230 | 523 |
| 600 | 390 | 890 | 795 | 735 | 50 | 20 | 58 | 5 | 689 | 549 | 829 | 1378 | 450 | 350 | 630 | 400 | 500 | 230 | 855 |
| 800 | 470 | 1140 | 1030 | 960 | 56 | 24 | 65 | 5 | 864 | 688 | 969 | 1657 | 580 | 500 | 400 | 400 | 500 | 230 | 1465 |

MOMENTI ZA ZATVARANJE LEPTIRASTIH ZATVARAČA SCHLISS - DREHMOMEMNTE BEI ABSPERRKLAPPEN CLOSING TORQUES FOR BUTTERFLY VALVES

| DN | M ₁ | | M ₂ | | PRENOSNI ODNOS PREKO MEHANIZMA ÜBERSETZUNG tÜBER GETRIEBE GEAR REDUCTION RATIO | | BROJ OKRETAJA ZATVARANJA UMDREHUNGEN/ HUB TURNS / CLOSE | | E-PRIGON E-ANTRIEBE E-ACTUATORS "AUMA" | |
|------|--|--------|---|-------|--|--------|---|-------|---|---------|
| | MOMENT NA IZLAZNOM VRATILU DREHMOMENT AN AUSGANGSWELLE OUTPUT SHAFT TORQUE | | MOMENT NA VRETENU MEHANIZMA DREHMOMENT AN GETRIEBEWELLE GEAR SHAFT TORQUE | | i | | | | | |
| | Nm | | Nm | | | | | | | |
| | PN 10 | PN 16 | PN 10 | PN 16 | PN 10 | PN 16 | PN 10 | PN 16 | PN 10 | PN 16 |
| 80 | 40 | 70 | | | | | | | | |
| 100 | 65 | 100 | | | | | | | | |
| 125 | 80 | 120 | | | | | | | | |
| 150 | 130 | 150 | 5 | 7 | 80:1 | 80:1 | 20 | 20 | SA 07.2 | SA 07.2 |
| 200 | 220 | 300 | 10 | 13 | 80:1 | 80:1 | 20 | 20 | SA 07.2 | SA 07.2 |
| 250 | 400 | 600 | 17 | 25 | 80:1 | 80:1 | 20 | 20 | SA 07.2 | SA 07.2 |
| 300 | 550 | 800 | 23 | 34 | 80:1 | 80:1 | 20 | 20 | SA 07.2 | SA 07.6 |
| 350 | 800 | 1200 | 33 | 50 | 80:1 | 80:1 | 20 | 20 | SA 07.6 | SA 07.6 |
| 400 | 1300 | 1900 | 39 | 57 | 112:1 | 112:1 | 28 | 28 | SA 07.6 | SA 07.6 |
| 450 | 1750 | 2800 | 50 | 84 | 112:1 | 112:1 | 28 | 28 | SA 07.6 | SA 07.6 |
| 500 | 2400 | 3800 | 72 | 88 | 112:1 | 144:1 | 28 | 36 | SA 10.2 | SA 07.6 |
| 600 | 3500 | 5800 | 81 | 134 | 144:1 | 144:1 | 36 | 36 | SA 10.2 | SA 14.2 |
| 700 | 5000 | 8700 | 116 | 143 | 204:1 | 204:1 | 51 | 51 | SA 10.2 | SA 14.2 |
| 800 | 8100 | 13400 | 133 | 220 | 204:1 | 204:1 | 51 | 51 | SA 14.2 | SA 14.2 |
| 900 | 11400 | 18300 | 187 | 300 | 204:1 | 204:1 | 51 | 51 | SA 14.2 | SA 14.6 |
| 1000 | 14900 | 24700 | 245 | 404 | 204:1 | 204:1 | 51 | 51 | SA 14.6 | SA 14.6 |
| 1100 | 19200 | 33200 | 313 | 160 | 204:1 | 816:1 | 51 | 204 | SA 14.6 | SA 14.2 |
| 1200 | 25700 | 41800 | 420 | 202 | 204:1 | 816:1 | 51 | 204 | SA 14.6 | SA 14.2 |
| 1400 | 38800 | 64200 | 186 | 234 | 816:1 | 1072:1 | 204 | 268 | SA 14.2 | SA 14.6 |
| 1500 | 44800 | 79400 | 327 | 291 | 536:1 | 1072:1 | 134 | 268 | SA 14.6 | SA 14.6 |
| 1600 | 57700 | 97000 | 307 | 260 | 737:1 | 1474:1 | 184 | 368 | SA 14.6 | SA 14.6 |
| 1800 | 78300 | 126000 | 286 | 335 | 1072:1 | 1474:1 | 268 | 368 | SA 14.6 | SA 14.6 |
| 2000 | 103500 | 162000 | 275 | 431 | 1474:1 | 1474:1 | 368 | 368 | SA 14.6 | SA 14.6 |

| DN | M ₁ | | M ₂ | | PRENOSNI ODNOS PREKO MEHANIZMA ÜBERSETZUNG ÜBER GETRIEBE GEAR REDUCTION RATIO | | BROJ OKRETAJA ZATVARANJA UMDREHUNGEN/HUB TURNS / CLOSE | | E-PRIGON E-ANTRIEBE E-ACTUATORS "AUMA" | |
|------|--|--------|---|-------|---|--------|---|-------|---|---------|
| | MOMENT NA IZLAZNOM VRATILU DREHMOMENT AN AUSGANGSWELLE OUTPUT SHAFT TORQUE | | MOMENT NA VRETENU MEHANIZMA DREHMOMENT AN GETRIEBEWELLE GEAR SHAFT TORQUE | | i | | | | | |
| | Nm | | Nm | | | | | | | |
| | PN 25 | PN 40 | PN 25 | PN 40 | PN 25 | PN 40 | PN 25 | PN 40 | PN 25 | PN 40 |
| 80 | | | | | | | | | | |
| 100 | | | | | | | | | | |
| 125 | | | | | | | | | | |
| 150 | 240 | 510 | 10 | 22 | 80:1 | 80:1 | 20 | 20 | SA 07.2 | SA 07.2 |
| 200 | 510 | 800 | 22 | 34 | 80:1 | 80:1 | 20 | 20 | SA 07.2 | SA 07.6 |
| 250 | 960 | 1500 | 40 | 45 | 80:1 | 112:1 | 20 | 28 | SA 07.6 | SA 07.6 |
| 300 | 1700 | 2600 | 50 | 80 | 112:1 | 112:1 | 28 | 28 | SA 07.6 | SA 10.2 |
| 350 | 2100 | 3300 | 63 | 99 | 112:1 | 112:1 | 28 | 28 | SA 10.2 | SA 10.2 |
| 400 | 2900 | 4500 | 87 | 105 | 112:1 | 144:1 | 28 | 36 | SA 10.2 | SA 10.2 |
| 450 | 4200 | 6100 | 98 | 142 | 144:1 | 144:1 | 36 | 36 | SA 10.2 | SA 14.2 |
| 500 | 5300 | 8400 | 123 | 140 | 144:1 | 204:1 | 36 | 51 | SA 14.2 | SA 14.2 |
| 600 | 8700 | 14300 | 142 | 245 | 204:1 | 204:1 | 51 | 51 | SA 14.2 | SA 14.6 |
| 700 | 13100 | 21800 | 220 | 356 | 204:1 | 204:1 | 51 | 51 | SA 14.2 | SA 14.6 |
| 800 | 22000 | 34700 | 360 | 167 | 204:1 | 816:1 | 51 | 204 | SA 14.6 | SA 14.2 |
| 900 | 30500 | 57250 | 148 | 210 | 816:1 | 1072:1 | 204 | 268 | SA 14.2 | SA 14.2 |
| 1000 | 38400 | 80800 | 185 | 296 | 816:1 | 1072:1 | 204 | 268 | SA 14.2 | SA 14.6 |
| 1100 | 52300 | 108800 | 192 | 289 | 1072:1 | 1474:1 | 268 | 368 | SA 14.2 | SA 14.6 |
| 1200 | 69300 | 133200 | 185 | 354 | 1474:1 | 1474:1 | 368 | 368 | SA 14.2 | SA 14.6 |

VM 002 - i=80:1

VM 003 - i=112:1

VM 004 - i=144:1

VM 005 - i=204:1

VM 005 + SGB 1 (4:1) - i=816:1

PM 400 + SGB 3 (8:1) - i=536:1

PM 400 + SGB 3 (11:1) - i=737:1

PM 400 + SGB 3 (16:1) - i=1072:1

PM 400 + SGB 4 (22:1) - i=1474:1

