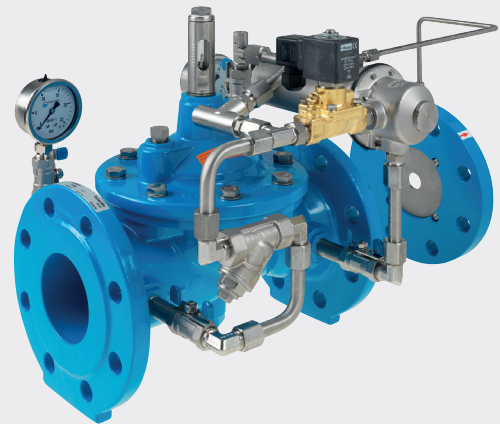
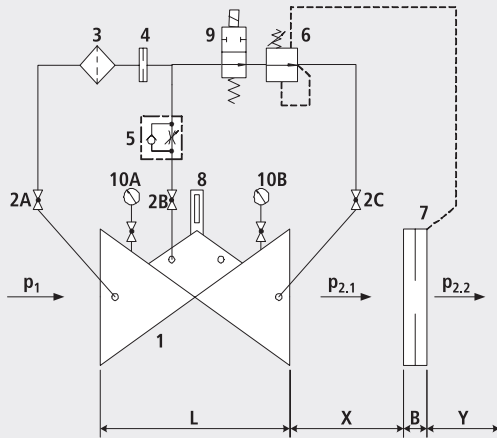


Flow limitation valve MBV with electrical remote control - open without current

1304



Components

- 1: Main valve
- 2: Ball valve (A, B, C)
- 3: Filter
- 4: Orifice
- 5: Throttle check valve
- 6: Control valve
- 7: Differential pressure orifice plate
- 8: Optical position indicator (optional: Electrical position indicator, opening limiter)
- 9: Electric solenoid valve
- 10: Manometer with ball valve (A, B)
- B: DN 40 to DN 150: 22 mm
DN 200 to DN 250: 27 mm
DN 300 to DN 400: 29 mm
- X: 5 x DN line
- Y: 3 x DN line

Product information

- To calculate the dimensions of the valve please refer to the following information:
- Maximum and minimum inlet pressure (static and dynamic pressure ratios)
- Required outlet pressure after the orifice plate
- Required flow rate
- Voltage information for the solenoid valve
- Permissible loss of pressure incl. measuring orifice (usually 0.5 bar over the valve and orifice plate)
- Available line diameters and lengths
- Construction of the valve (straight or angle design)
- For the calculation basis, information on the loss of pressure and the characteristic values of the valve, please refer to the end of Chapter E.

Application

- To use in drinking water systems (other media after consultation)
- Limitation of the inflow from a pressure zone into a lower pressure zone
- Constantly maintaining a filter flow
- The supply to a secondary network necessitates a limitation of the flow, so as to not endanger, for example, the extinguishing reservoir of the primary network (in combination with a reduction in pressure).

Mode of operation

- The flow-control valve completely hydraulically ensures a pre-determined maximum flow, irrespective of any changes in the operating pressure. The nominal flow rate can be progressively varied up to $\pm 15\%$ via the control valve. The valve is taken out of operation by the solenoid valve (customer's control system). The valve is in operation when the power is off.

Installation and assembly

- Shut-off valves should be fitted on both sides of the valve and a dirt trap should be installed on the inlet side of the valve. Depending on the installation situation, a mounting/dismounting adapter and an aeration and ventilation system should be provided.
- The orifice plate must be installed after the valve. It is recommended that the following measurements are taken into consideration:
- X = 5 x DN, distance between the valve and the orifice plate in a straight line
- Y = 3 x DN, distance after the orifice plate and the shut-off component, in a straight line

Artikel-Nr.	DN	PN	L	kg
1304007000	1 1/2"	16	210	11.000
1304008000	2"	16	210	11.100
1304040000	40	16	200	15.750
1304050000	50	16	230	16.250
1304065000	65	16	290	21.300
1304080000	80	16	310	27.400
1304100000	100	16	350	35.400
1304125000	125	16	400	51.500
1304150000	150	16	480	76.000
1304200000	200	10	600	114.600
1304200016	200	16	600	114.600
1304250000	250	10/16	730	247.000
1304300000	300	10/16	850	358.000