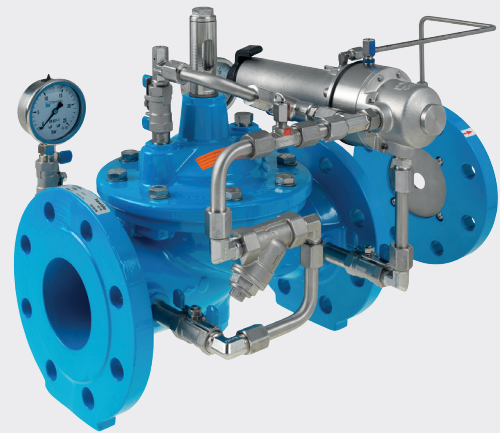
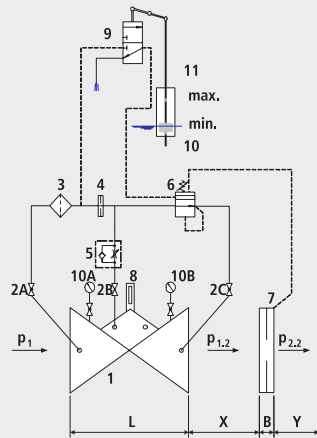


Flow limitation valve MBV with float control

1306



**Components**

- 1: Main valve
- 2: Ball valve (A, B, C)
- 3: Filter
- 4: Orifice
- 5: Throttle check valve
- 6: Control valve
- 7: Differential pressure orifice plate
- 8: Optical position indicator (optional: Electrical position indicator, opening limiter)
- 9: Float valve
- 10: Float
- 11: Float protection pipe (optional)
- 12: Pressure gauge with ball valve
- B: DN 40 to DN 150: 22 mm  
DN 200 to DN 250: 27 mm  
DN 300 to DN 400: 29 mm
- X: 5 x DN line
- Y: 3 x DN line

**Application**

- To use in drinking water systems (other media after consultation)
- Limitation of an inflow into a water reservoir
- Maintaining the filter flow constant whilst taking into account the water level

**Mode of operation**

- The flow-control valve completely hydraulically ensures a pre-determined maximum flow, irrespective of any changes in the operating pressure taking into account the level of water in the reservoir (the float control opens when the water level is low). The nominal flow rate can be progressively varied up to  $\pm 15\%$  via the control valve. The valve closes when the level of water in the reservoir has been reached.

**Product information**

- To calculate the dimensions of the valve please refer to the following information:
- Maximum and minimum inlet pressure (static and dynamic pressure ratios)
- Counterpressure from the water level in the reservoir
- Required flow rate
- Permissible loss of pressure incl. measuring orifice (usually 0.5 bar over the valve and orifice plate)
- Available line diameters and lengths
- Construction of the valve (straight or angle design)
- For the calculation basis, information on the loss of pressure and the characteristic values of the valve, please refer to the end of Chapter E.

**Installation and assembly**

- Shut-off valves should be fitted on both sides of the valve and a dirt trap should be installed on the inlet side of the valve. Depending on the installation situation, a mounting/dismounting adapter and an aeration and ventilation system should be provided.
- The orifice plate must be installed after the valve. It is recommended that the following measurements are taken into consideration:
- X = 5 x DN, distance between the valve and the orifice plate in a straight line
- Y = 3 x DN, distance after the orifice plate and the shut-off component, in a straight line

Artikel-Nr.	DN	PN	L	kg
1306007000	1 1/2"	16	210	11.000
1306008000	2"	16	210	11.000
1306040000	40	16	200	15.750
1306050000	50	16	230	16.250
1306065000	65	16	290	21.300
1306080000	80	16	310	27.400
1306100000	100	16	350	35.400
1306125000	125	16	400	51.500
1306150000	150	16	480	76.000
1306200000	200	10	600	114.600
1306200016	200	16	600	114.600
1306250000	250	10/16	730	247.000
1306300000	300	10/16	850	358.000