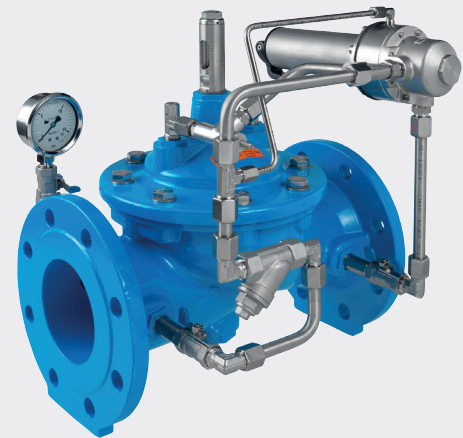
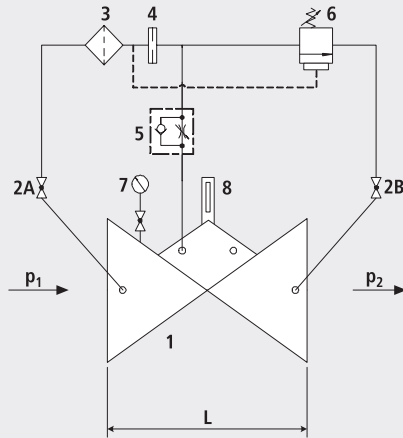


Pressure relief and pressure retention valve DAV

1400



Components

- 1: Main valve
- 2: Ball valve (A, B)
- 3: Filter
- 4: Orifice
- 5: Throttle check valve
- 6: Control valve
- 7: Pressure gauge with ball valve
- 8: Optical position indicator (optional: Electrical position indicator, opening limiter)

Application

- To use in drinking water systems (other media after consultation)
- Sustaining the network pressure in a supply
- Protecting the network by releasing excess pressure

Mode of operation

- The pressure relief valve maintains constant the pre-set inlet pressure (p1). Any excess system pressure is relieved by fast opening of the valve. The closing procedure is slow in order to avoid shock pressure loads. Variable flow rates have no effect on the maintained pressure which is regulated by the control valve. The overpressure or maintained pressure can be set within the range of 2 bar to 16 bar (standard design).

Product information

- To calculate the dimensions of the valve please refer to the following information:
- Maximum and minimum inlet pressure (static and dynamic pressure ratios)
- Required sustained pressure or discharge pressure
- Maximum and minimum flow rates
- Available line diameters and lengths
- Construction of the valve (straight or angle design)
- For the calculation basis, information on the loss of pressure and the characteristic values of the valve, please refer to the end of Chapter E.

Installation and assembly

- Shut-off valves should be fitted on both sides of the valve and a dirt trap should be installed on the inlet side of the valve. If the valve outlet flows to the outside or into a shaft, the outlet slider can be omitted. Depending on the installation situation, a mounting/dismounting adapter should be provided.

Artikel-Nr.	DN	PN	L	kg	NPK No. 411
1400007000	1 1/2"	16	210	11.900	
1400008000	2"	16	210	13.750	
1400008025	2"	25	210	13.750	
1400040000	40	16	200	13.900	833215
1400040025	40	25	200	13.900	
1400050000	50	16	230	16.250	833216
1400050025	50	25	230	16.250	
1400065000	65	16	290	21.300	833217
1400065025	65	25	290	21.350	
1400080000	80	16	310	28.000	833218
1400080025	80	25	310	27.400	
1400100000	100	16	350	35.800	833219
1400100025	100	25	350	35.400	
1400125000	125	16	400	51.500	833241
1400125025	125	25	400	51.500	
1400150000	150	16	480	76.000	833242
1400150025	150	25	480	76.000	
1400200000	200	10	600	114.600	
1400200016	200	16	600	114.600	833243
1400250000	250	10/16	730	178.000	
1400300000	300	10/16	850	358.000	