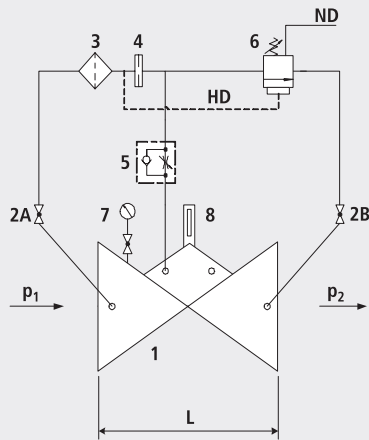


Input pressure control valve

1402



**Components**

- 1: Main valve
- 2: Ball valve (A, B)
- 3: Filter
- 4: Orifice
- 5: Throttle check valve
- 6: Control valve
- 7: Pressure gauge with ball valve
- 8: Optical position indicator (optional: Electrical position indicator, opening limiter)
- LP - external pressure (lower than p1 resp. HP)
- HP - Higher pressure

**Application**

- To use in drinking water systems (other media after consultation)
- Sustaining the network pressure in a supply in relation to a specific external pressure
- As an open/shut valve with minimal holding pressure and hydraulic control.

**Mode of operation**

- The input pressure control valve opens when there is a specific predetermined difference in pressure between the inlet pressure (p1) and a lower external pressure. The closing procedure is slow in order to avoid shock pressure loads. Variable flow rates have no effect on the maintained pressure which is regulated by the control valve.

**Product information**

- To calculate the dimensions of the valve please refer to the following information:
- Maximum and minimum inlet pressure (static and dynamic pressure ratios)
- Required sustained pressure or discharge pressure
- Possible pressure differential of the external pressure
- Maximum and minimum flow rates
- Available line diameters and lengths
- Construction of the valve (straight or angle design)
- For the calculation basis, information on the loss of pressure and the characteristic values of the valve, please refer to the end of Chapter E.

**Installation and assembly**

- Shut-off valves should be fitted on both sides of the valve and a dirt trap should be installed on the inlet side of the valve. If the valve outlet flows to the outside or into a shaft, the outlet slider can be omitted. Depending on the installation situation, a mounting/dismounting adapter should be provided.

Artikel-Nr.	DN	PN	L	kg
1402007000	1 1/2"	16	210	11.000
1402008000	2"	16	210	10.000
1402040000	40	16	200	15.750
1402050000	50	16	230	16.250
1402065000	65	16	290	21.000
1402080000	80	16	310	27.400
1402100000	100	16	350	35.400
1402125000	125	16	400	51.500
1402150000	150	16	480	76.000
1402200000	200	10	600	114.600
1402200016	200	16	600	114.600
1402250000	250	10/16	730	247.000
1402300000	300	10/16	850	359.000