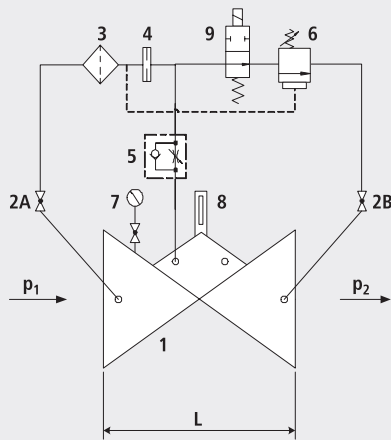


Pressure relief and pressure retention valve DAV for electrical control - open without current

1404



Components

- 1: Main valve
- 2: Ball valve (A, B)
- 3: Filter
- 4: Orifice
- 5: Throttle check valve
- 6: Control valve
- 7: Pressure gauge with ball valve
- 8: Optical position indicator
- 9: Electric solenoid valve

Application

- To use in drinking water systems (other media after consultation)
- Sustaining the network pressure in a supply
- Protecting the network by releasing excess pressure

Mode of operation

- The pressure relief valve maintains constant the pre-set inlet pressure (p1). Any excess system pressure is relieved by fast opening of the valve. The closing procedure is slow in order to avoid shock pressure loads. Variable flow rates have no effect on the maintained pressure which is regulated by the control valve. The overpressure or maintained pressure can be set within the range of 2 bar to 16 bar (standard design). The valve is opened (started up) or closed via the electric solenoid valve.

Product information

- To calculate the dimensions of the valve please refer to the following information:
- Maximum and minimum inlet pressure (static and dynamic pressure ratios)
- Required sustained pressure or discharge pressure
- Voltage information for the solenoid valve
- Maximum and minimum flow rates
- Available line diameters and lengths
- Construction of the valve (straight or angle design)
- For the calculation basis, information on the loss of pressure and the characteristic values of the valve, please refer to the end of Chapter E.

Installation and assembly

- Shut-off valves should be fitted on both sides of the valve and a dirt trap should be installed on the inlet side of the valve. If the valve outlet flows to the outside or into a shaft, the outlet slider can be omitted. Depending on the installation situation, a mounting/dismounting adapter should be provided.

Artikel-Nr.	DN	PN	L	kg
1404007000	1 1/2"	16	210	11.000
1404008000	2"	16	210	11.000
1404040000	40	16	200	15.750
1404050000	50	16	230	16.250
1404065000	65	16	290	21.300
1404080000	80	16	310	27.400
1404100000	100	16	350	35.400
1404125000	125	16	400	51.500
1404150000	150	16	480	76.000
1404200000	200	10	600	114.600
1404200016	200	16	600	114.600
1404250000	250	10/16	730	247.000
1404300000	300	10/16	850	359.000