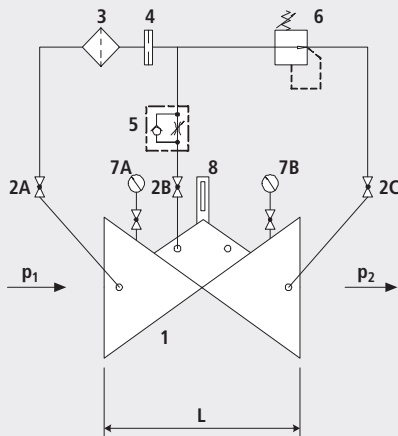


Pressure reducing valve

1500



Components

- 1: Main valve
- 2: Ball valve (A, B, C)
- 3: Filter
- 4: Orifice
- 5: Throttle check valve
- 6: Control valve
- 7: Manometer with ball valve (A, B)
- 8: Optical position indicator (optional: Electrical position indicator, opening limiter)

Application

- To use in drinking water systems (other media after consultation)
- Reduction in pressure to supply the network
- Emergency feed into a second network (network connections)

Mode of operation

- The pressure reducing valve reduces a variable inlet pressure to a constant outlet pressure. Fluctuating inlet pressure and flow rate have no effect on the outlet pressure controlled by the control valve. The outlet pressure is adjustable in the range from 1.5 to 12 bar (standard design).

Product information

- To calculate the dimensions of the valve please refer to the following information:
- Maximum and minimum inlet pressure (static and dynamic pressure ratios)
- Desired outlet pressure
- Maximum and minimum flow rates
- Possible requirement for extinguishing water
- Available line diameters and lengths
- Construction of the valve (straight or angle design)
- For the calculation basis, information on the loss of pressure and the characteristic values of the valve, please refer to the end of Chapter E.

Installation and assembly

- Shut-off valves should be fitted on both sides of the valve and a dirt trap should be installed on the inlet side of the valve. Depending on the installation situation, a mounting/dismounting adapter and an aeration and ventilation system should be provided.

Artikel-Nr.	DN	PN	L	kg	NPK No. 411
1500007000	1 1/2"	16	210	13.000	
1500007025	1 1/2"	25	210	13.000	
1500008000	2"	16	210	13.000	
1500008025	2"	25	210	13.000	
1500040000	40	16	200	15.000	833115
1500040025	40	25	200	15.000	
1500050000	50	16	230	16.200	833116
1500050025	50	25	230	15.950	
1500065000	65	16	290	20.550	833117
1500065025	65	25	290	20.700	
1500080000	80	16	310	27.600	833118
1500080025	80	25	310	26.600	
1500100000	100	16	350	35.400	833119
1500100025	100	25	350	34.600	
1500125000	125	16	400	52.200	833141
1500125025	125	25	400	50.600	
1500150000	150	16	480	76.200	833142
1500150025	150	25	480	76.000	
1500200000	200	10	600	113.650	
1500200016	200	16	600	113.650	833143
1500200025	200	25	600	113.650	833163
1500250000	250	10/16	730	165.000	
1500300000	300	10/16	850	358.000	