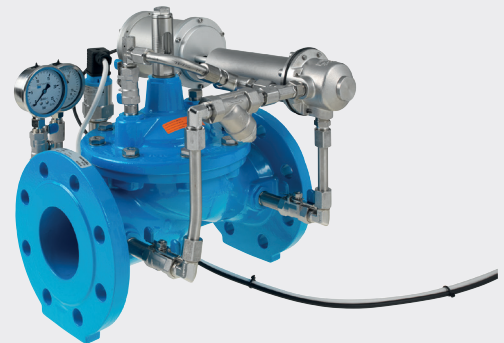
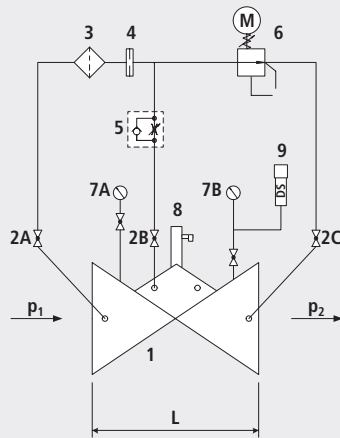


Pressure reducing valve with motor driven pilot valve

1515



Components

- 1: Main valve
- 2: Ball valve (A, B, C)
- 3: Filter
- 4: Orifice
- 5: Throttle check valve
- 6: Control valve with motor drive
- 7: Manometer with ball valve (A, B)
- 8: Electric position indicator (No. 1998) must be ordered separately.
- 9: Pressure sensor (4 - 20 mA)

Product information

- To calculate the dimensions of the valve please refer to the following information:
- Maximum and minimum inlet pressure (static and dynamic pressure ratios)
- Pressure levels and time zones
- Desired outlet pressure
- Maximum and minimum flow rates
- Possible requirement for extinguishing water
- Available line diameters and lengths
- Construction of the valve (straight or angle design)
- For the calculation basis, information on the loss of pressure and the characteristic values of the valve, please refer to the end of Chapter E.

Application

- In combination with a PLC controller, different time-dependent target pressure values, for example, can be set. This application can be used for lowering the pressure during the night or for setting up a higher extinguishing pressure.

Mode of operation

- The pressure reducing valve with motor-driven pilot valve reduces a variable inlet pressure (p1) to a constant lower outlet pressure (P2). Fluctuating flow rate and inlet pressure have no effect on the outlet pressure controlled by the control valve. The outlet pressure (p2) is adjustable in the range from 1.5 to 12 bar.

Installation and assembly

- Shut-off valves should be fitted on both sides of the valve and a dirt trap should be installed on the inlet side of the valve. Depending on the installation situation, a mounting/dismounting adapter and an aeration and ventilation system should be provided.

Artikel-Nr.	DN	PN	L	kg
1515040000	40	10/16	200	17.000
1515050000	50	10/16	230	17.500
1515065000	65	10/16	290	22.600
1515080000	80	10/16	310	28.600
1515100000	100	10/16	350	36.600
1515125000	125	10/16	400	52.600
1515200010	200	10	600	115.700
1515200016	200	16	600	115.700
1515250000	250	10/16	730	249.000
1515300010	300	10/16	850	360.000