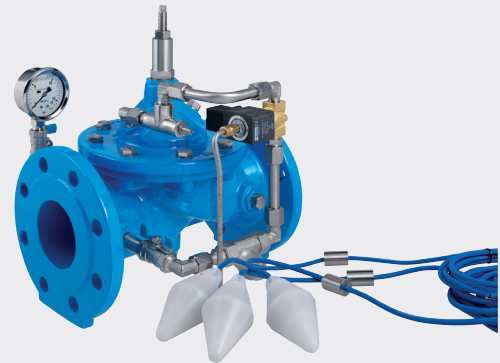
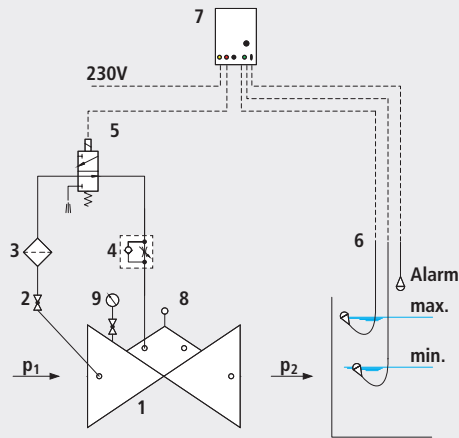


On/Off valve for electrical control - closes without current

1603



Components

- 1: Main valve
- 2: Ball valve
- 3: Filter
- 4: Throttle check valve
- 5: 3-way solenoid valve
- 6: Float switch
- 7: Electric control (option)
- 8: Opening limiter
- 9: Pressure gauge with ball valve

Product information

- To calculate the dimensions of the valve please refer to the following information:
- Maximum and minimum inlet pressure (static and dynamic pressure ratios)
- Existing counterpressure of the reservoir
- Required flow rate
- Voltage information for the solenoid valve
- Available line diameters and lengths
- Construction of the valve (straight or angle design)
- The level switch operates with 24 VDC. The supply voltage for the control is 230 VAC.
- For the calculation basis, information on the loss of pressure and the characteristic values of the valve, please refer to the end of Chapter E.

Application

- To use in drinking water systems (other media after consultation)
- Level control in a reservoir or pressure-breaking shaft
- Level control in an equalising basin

Mode of operation

- The open/close valve with an electric level switch, opens or closes for the electric actuation via the level switch and the solenoid valve. The valve is closed when it is de-energised. The closing speed can be adjusted by means of a throttle non-return valve to prevent surges in pressure.

Installation and assembly

- Shut-off valves should be fitted on both sides of the valve and a dirt trap should be installed on the inlet side of the valve. Depending on the installation situation, a mounting/dismounting adapter should be provided. If there is a free run into the water tank downstream from the valve, the slider on the outlet side can be omitted. Depending on the pressure ratios, an orifice plate should be installed on the outlet side of the valve and an opening limiter on the valve. The installation of a float protection pipe is recommended to guide the float.

Accessories

- Control (No. 1980603A0A)

| Artikel-Nr. | DN | PN | L | kg |
|-------------|--------|-------|-----|---------|
| 1603007000 | 1 1/2" | 16 | 210 | 9.000 |
| 1603008000 | 2" | 16 | 210 | 10.000 |
| 1603040000 | 40 | 16 | 200 | 15.000 |
| 1603050000 | 50 | 16 | 230 | 17.800 |
| 1603065000 | 65 | 16 | 290 | 23.000 |
| 1603080000 | 80 | 16 | 310 | 26.600 |
| 1603100000 | 100 | 16 | 350 | 37.000 |
| 1603125000 | 125 | 16 | 400 | 53.000 |
| 1603150000 | 150 | 16 | 480 | 76.000 |
| 1603200000 | 200 | 10 | 600 | 116.100 |
| 1603200016 | 200 | 16 | 600 | 118.000 |
| 1603250000 | 250 | 10/16 | 730 | 249.000 |
| 1603300000 | 300 | 10/16 | 850 | 356.000 |

Comment: Up to DN 100 as per the diagram. From DN 125 with orifice plate and 2/2-way solenoid valve.