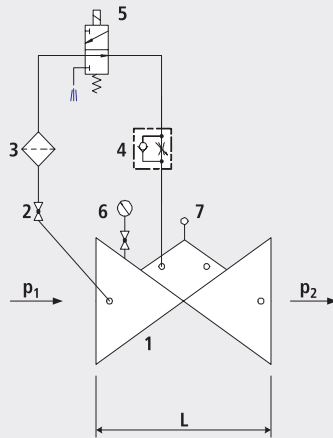


On/Off valve for electrical remote control - closed without current

1703



Components

- 1: Main valve
- 2: Ball valve
- 3: Filter
- 4: Throttle check valve
- 5: Electric solenoid valve
- 6: Pressure gauge with ball valve
- 7: Opening limiter

Application

- To use in drinking water systems (other media after consultation)
- Opening or closing a supply system by means of an electrical signal

Mode of operation

- The open/close valve hydraulically opens or closes for the electric actuation via the solenoid valve fitted on the control line. The valve is shut when the power is off. The closing speed can be adjusted by means of a throttle non-return valve to prevent surges in pressure.

Product information

- To calculate the dimensions of the valve please refer to the following information:
- Maximum and minimum inlet pressure (static and dynamic pressure ratios)
- Existing counterpressure of the reservoir
- Required flow rate
- Maximum permissible loss of pressure
- Voltage information for the solenoid valve
- Available line diameters and lengths
- Construction of the valve (straight or angle design)
- For the calculation basis, information on the loss of pressure and the characteristic values of the valve, please refer to the end of Chapter E.

Installation and assembly

- Shut-off valves should be fitted on both sides of the valve and a dirt trap should be installed on the inlet side of the valve. Depending on the installation situation, a mounting/dismounting adapter should be provided.

Artikel-Nr.	DN	PN	L	kg	NPK No. 411
1703007000	1 1/2"	16	210	9.000	
1703008000	2"	16	210	9.000	
1703040000	40	16	200	11.100	845115
1703050000	50	16	230	16.750	845116
1703050025	50	25	230	16.750	
1703065000	65	16	290	21.800	845117
1703080000	80	16	310	27.900	845118
1703100000	100	16	350	35.900	845119
1703125000	125	16	400	52.000	845121
1703150000	150	16	480	76.000	845122
1703200000	200	10	600	115.100	845123
1703200016	200	16	600	115.100	
1703250000	250	10/16	730	247.500	845124
1703300000	300	10/16	850	358.500	845125

Comment: Up to DN 100 as per the diagram. From DN 125 with orifice plate and 2/2-way solenoid valve.