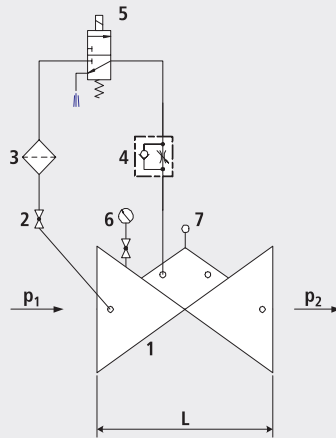


On/Off valve for electrical remote control - open without current

1704



Components

- 1: Main valve
- 2: Ball valve
- 3: Filter
- 4: Throttle check valve
- 5: Electric solenoid valve
- 6: Pressure gauge with ball valve
- 7: Opening limiter

Application

- To use in drinking water systems (other media after consultation)
- Opening or closing a supply system by means of an electrical signal

Mode of operation

- The open/close valve hydraulically opens or closes for the electric actuation via the solenoid valve fitted on the control line. The valve is open when the power is off. The closing speed can be adjusted by means of a throttle non-return valve to prevent surges in pressure.

Product information

- To calculate the dimensions of the valve please refer to the following information:
- Maximum and minimum inlet pressure (static and dynamic pressure ratios)
- Existing counterpressure
- Required flow rate
- Maximum permissible loss of pressure
- Voltage information for the solenoid valve
- Available line diameters and lengths
- Construction of the valve (straight or angle design)
- For the calculation basis, information on the loss of pressure and the characteristic values of the valve, please refer to the end of Chapter E.

Installation and assembly

- Shut-off valves should be fitted on both sides of the valve and a dirt trap should be installed on the inlet side of the valve. Depending on the installation situation, a mounting/dismounting adapter should be provided.

Artikel-Nr.	DN	PN	L	kg
1704007000	1 1/2"	16	210	9.000
1704008000	2"	16	210	9.000
1704040000	40	16	200	16.250
1704050000	50	16	230	16.750
1704065000	65	16	290	21.800
1704080000	80	16	310	27.900
1704100000	100	16	350	35.900
1704125000	125	16	400	52.000
1704150000	150	16	480	76.000
1704200000	200	10	600	115.100
1704200016	200	16	600	115.100
1704250000	250	10/16	730	247.500
1704300000	300	10/16	850	358.000

Comment: Up to DN 100 as per the diagram. From DN 125 with orifice plate and 2/2-way solenoid valve.