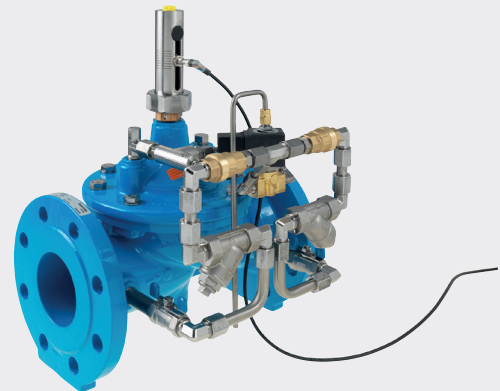
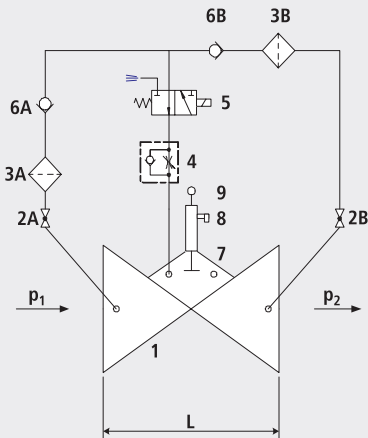


Pump protection valve with mechanical non-return flap

1705



**Components**

- 1: Main valve
- 2: Ball valve (A, B)
- 3: Filter (A, B)
- 4: Throttle check valve
- 5: Electric solenoid valve
- 6: Check valve (A, B)
- 7: Mechanical non-return flap
- 8: Electric position indicator
- 9: Accessories (optional)

**Application**

- To use in drinking water systems (other media after consultation)
- Actuation of the valve with the pump control system
- Protection of the pump against overloading caused by a no-load operation

**Mode of operation**

- The pump protection valve opens with a time delay after the pump is started up. Consequently the network pressure increases to the full pump pressure before the valve opens. With a controlled stopping of the pump, the valve closes before the pump stops. The opening and closing speeds can be set on the throttle non-return valve. In the event of a power failure, the fitted mechanical non-return flap prevents the valve from closing too quickly and consequently a backflow to the pump.

**Product information**

- To calculate the dimensions of the valve please refer to the following information:
- Maximum and minimum inlet pressure (static and dynamic pressure ratios)
- Existing counterpressure
- Required flow rate, pump capacity
- Maximum permissible loss of pressure
- Voltage information for the solenoid valve
- Available line diameters and lengths
- Construction of the valve (straight or angle design)
- The controller is to be provided by the customer.
- For the calculation basis, information on the loss of pressure and the characteristic values of the valve, please refer to the end of Chapter E.

**Installation and assembly**

- The pump protection valve is installed in the feed pipe of the pipe. A shut-off valve is to be installed on the outlet side.

Artikel-Nr.	DN	PN	L	kg
1705007000	1 1/2"	16	210	9.000
1705008000	2"	16	210	9.000
1705040000	40	16	200	16.250
1705050000	50	16	230	16.750
1705065000	65	16	290	21.800
1705080000	80	16	310	27.900
1705100000	100	16	350	35.900
1705125000	125	16	400	52.000
1705150000	150	16	480	76.000
1705200000	200	10	600	115.100
1705200016	200	16	600	115.100
1705250000	250	10/16	730	247.500
1705300000	300	10/16	850	356.000