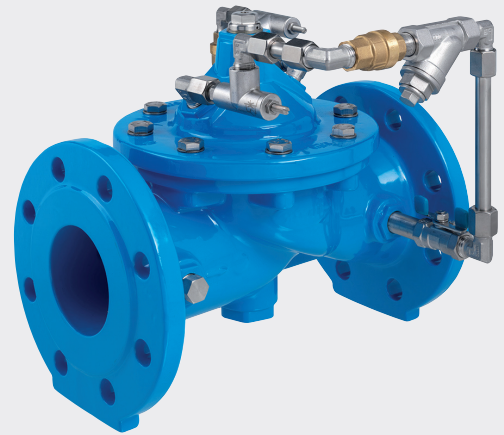
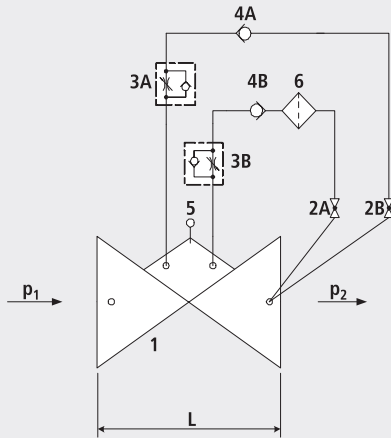


Backflow prevention valve

1707



Components

- 1: Main valve
- 2: Ball valve (A, B)
- 3: Throttle check valve (A, B)
- 4: Check valve (A, B)
- 5: Accessories (optional)
- 6: Filter

Application

- To use in drinking water systems (other media after consultation)
- Prevention of backflow into the supply system
- Can be used, above all else, in combination with other valve functions

Mode of operation

- The backflow prevention valve hydraulically prevents any backflow, when the inlet pressure is lower than the outlet pressure. The opening and closing speeds can be set on the throttle non-return valve.

Product information

- To calculate the dimensions of the valve please refer to the following information:
- Maximum and minimum inlet pressure (static and dynamic pressure ratios)
- Existing counterpressure
- Maximum permissible loss of pressure
- Available line diameters and lengths
- Construction of the valve (straight or angle design)
- For the calculation basis, information on the loss of pressure and the characteristic values of the valve, please refer to the end of Chapter E.

Installation and assembly

- Shut-off valves should be fitted on both sides of the valve and a dirt trap should be installed on the inlet side of the valve.

Artikel-Nr.	DN	PN	L	kg
1707007000	1 1/2"	16	210	13.000
1707008000	2"	16	210	13.000
1707040000	40	16	200	16.250
1707050000	50	16	230	16.750
1707065000	65	16	290	20.550
1707080000	80	16	310	27.000
1707100000	100	16	350	34.600
1707125000	125	16	400	50.600
1707150000	150	16	480	76.000
1707200000	200	10	600	110.000
1707200016	200	16	600	110.000
1707250000	250	10/16	730	245.000
1707300000	300	10/16	850	356.000