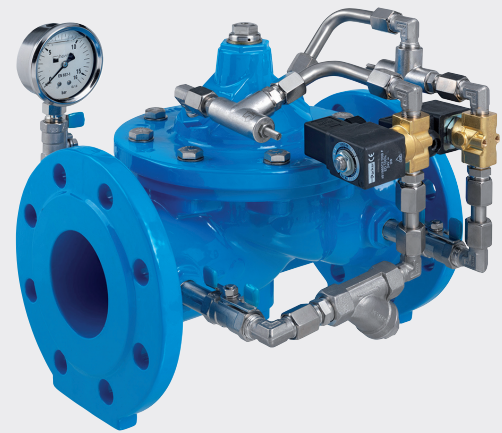
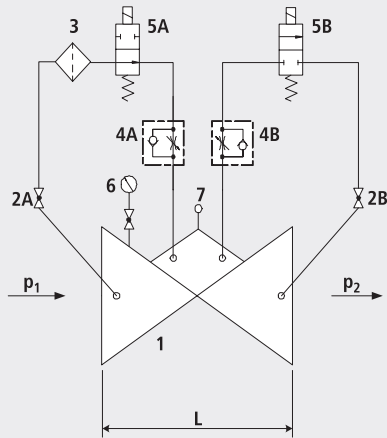


On/Off valve for electrical remote control stepwise working - closed without current

1795



Components

- 1: Main valve
- 2: Ball valve (A, B)
- 3: Filter
- 4: Throttle check valve (A, B)
- 5: Electric solenoid valve (A, B)
- 6: Pressure gauge with ball valve
- 7: Vent plug

Application

- To use in drinking water systems (other media after consultation)
- Slow, step-by-step opening or closing of a supply system by means of electrical impulses
- Regulation of water levels in the reservoir (regulation of the inflow or outflow in the reservoir)
- Regulation of the flow rates
- Regulation of the flow rates for cooling circuits (in conjunction with a temperature switch)

Mode of operation

- The open/close valve for the electric actuation opens or closes step-by-step depending on the respective actuation of the solenoid valve. The valve closes when the solenoid valves are de-energised. The opening and closing speeds can be set on the throttle non-return valve.

Product information

- To calculate the dimensions of the valve please refer to the following information:
- Maximum and minimum inlet pressure (static and dynamic pressure ratios)
- Existing counterpressure
- Required flow rate
- Maximum permissible loss of pressure
- Voltage information for the solenoid valve
- Available line diameters and lengths
- Construction of the valve (straight or angle design)
- For the calculation basis, information on the loss of pressure and the characteristic values of the valve, please refer to the end of Chapter E.

Installation and assembly

- Shut-off valves should be fitted on both sides of the valve and a dirt trap should be installed on the inlet side of the valve. Depending on the installation situation, a mounting/dismounting adapter should be provided.

Accessories

- Electric position indicator for a valve position (No. 1998)
- Electric position indicator for two valve positions (No. 1999)
- Analogue position indicator with outlet signal 4 –20 mA (n° 1960)

Artikel-Nr.	DN	PN	L	kg
1795007000	1 1/2"	16	210	10.000
1795008000	2"	16	210	10.000
1795040000	40	16	200	11.500
1795050000	50	16	230	11.500
1795065000	65	16	290	17.000
1795080000	80	16	310	23.000
1795100000	100	16	350	32.000
1795125000	125	16	400	48.000
1795150000	150	16	480	76.000
1795200000	200	10	600	118.000
1795200016	200	16	600	105.000
1795250000	250	10/16	730	243.000
1795300000	300	10/16	850	354.000