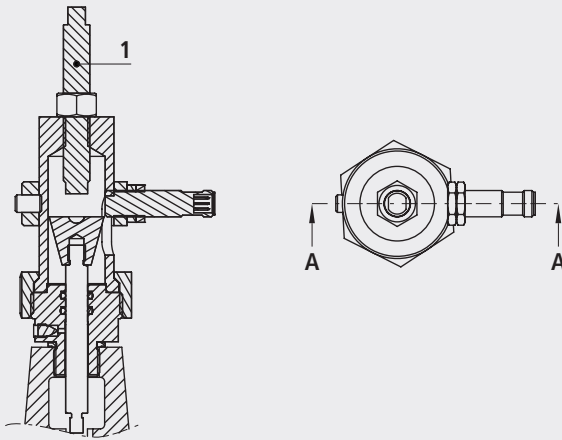


Analog position indicator 4 till 20 mA

1960

**Application**

- The analogue position indicator is mounted on the central outlet of the valve cover. It is used for the electric signalling of an analogue valve position (0 to 100%).

Material

- INOX

Spare parts

- Composite sealing ring (No. 0130) (specify valve DN)
- Inductive analog sensor (No. 1961903011)
- Cable box angled (No. 1961903001)

Accessories

- 1: Opening limiter:
DN 40 to DN 100: (No. 1999806100)
DN 125 to DN 200: (No. 1999806200)

Artikel-Nr.	DN	kg
1960000001	1 1/2" - 50	1.100
1960000002	65-100	1.100
1960000003	125-200	1.350
1960000004	250	1.710
1960000005	300	1.710