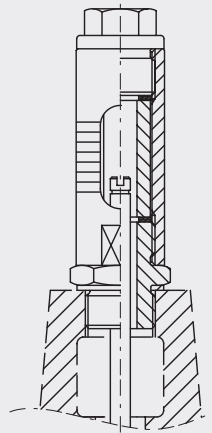


## Optical position indicator

1995

**Application**

- The optical position indicator is mounted on the central outlet of the valve cover. The valve position indicator is connected with the spindle and always shows the degree to which the valve is open.

**Material**

- INOX and safety glass design

**Spare parts**

- Indicator glass (No. 1993)
- Seal (No. 1992900030)

Artikel-Nr.	DN
1995000050	40-50
1995000080	65-80
1995000100	100
1995000125	125
1995000150	150
1995000200	200
1995000250	250
1995000300	300