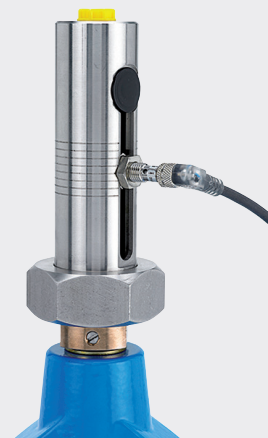
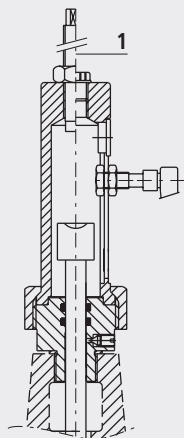


Electrical position indicator with sensor

1998

**Application**

- To signal the closed or open position of the valve for monitoring purposes (e.g. with safety valves)
- Combination also possible with an opening limitation (on request)
- Display with 2 signal positions: (No. 1999)

Mode of operation

- A valve position can also be indicated electrically via the sensor.

Product information

- It can also be built on afterwards on the valve.

Design

- Pressure level PN 25, all nominal widths

Material

- INOX design

Accessories

- 1: Opening limiter:
DN 40 to DN 100: (No. 1999806100)
DN 125 to DN 200: (No. 1999806200)

Artikel-Nr.	DN	kg
1998000050	40-50	1.000
1998000100	65-100	1.100
1998000200	125-200	1.250
1998000250	250	1.300
1998000300	300	1.300