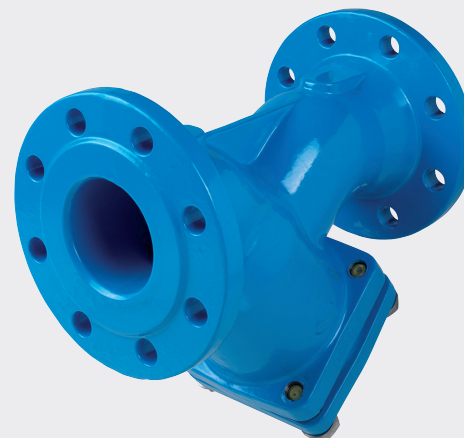
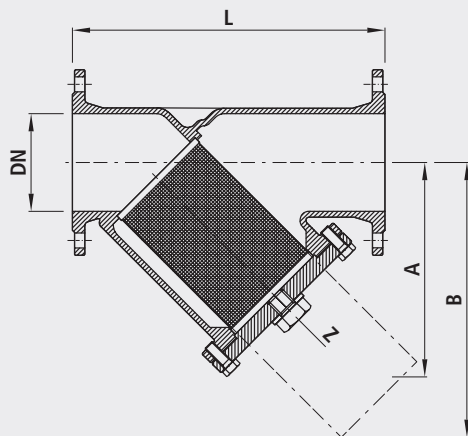


Dirt trap, PN 25

2011



**Characteristics**

- Construction length acc. to DIN EN 558
- Flange dimensions acc. to DIN 1092-2
- Medium temperature 2 to 40°C

**Material**

- Housing and cover: GJS-500-7
- Filter: INOX double sieve

**Spare parts**

- Sieve inserts standard, Mesh width 0.5 mm (No. 2051)
- Sieve inserts irrigation, Mesh width 2 mm or 5 mm (No. 2056), other cuff widths on request
- Cover seal (No. 2092)
- Plug and plug seal (No. 2093)

Artikel-Nr.	DN	PN	L	A	B	Z	kg
2011040000	40	25	200	150	240	1"	8.600
2011050000	50	25	230	160	250	1"	10.900
2011065000	65	25	290	180	285	1"	16.400
2011080000	80	25	310	215	330	1"	23.000
2011100000	100	25	350	235	365	1½"	29.400
2011125000	125	25	400	280	425	1½"	42.600
2011150000	150	25	480	320	480	1½"	55.000
2011200000	200	25	600	405	610	1½"	106.000
2011250000	250	25	730	540	915	1½"	173.000
2011300000	300	25	850	680	1110	1½"	279.000